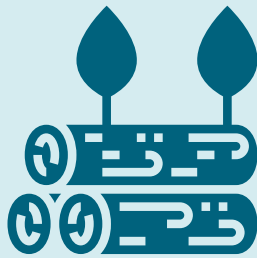


# 8 FACTS ABOUT LOG TRANSPORTATION

## Roundwood removals

**72.7** m. m<sup>3</sup>



consisting of **61 m. m<sup>3</sup>** of logs and pulpwood and **11.4 m. m<sup>3</sup>** of energywood

## Lorry transportation accounted for

**68 %**

of all timber transported to mills

## The number of timber transport enterprises was

**553**

Half of the companies own one lorry and the other half 2-5 lorries.

In 2023 logs, chips and sawdust accounted for 16 % of the total lorry volume of transport of Finland.



**1.2** m.

timber loads of 60 m<sup>3</sup> were transported in 2023



## The average distance of a timber load transport was

**105** km



## Number of timber lorries in use was

**1573** in 2023

One lorry employs 2-3 drivers.



## Timber lorry registrations averaged

**210**

lorries per year between 2019-2023.



### SOURCES AND ADDITIONAL INFORMATION:

The project was financed by the Metsämiesten Säätiö Foundation, Koneyrittäjät ry, Metsäalan Kuljetusyrittäjät ry. Donations and foundation mergers are an important part of the effectiveness of Metsämiesten Säätiö Foundation's public benefit activities.

The complete list of references: <https://www.ptt.fi/julkaisut/puunkorjuun-ja-kuljetuksen-infograafit/>