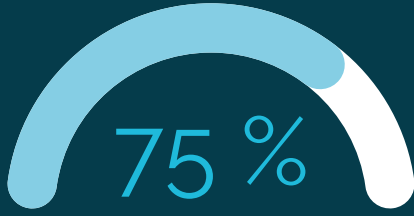


FINNISH FORESTS: A SOURCE OF INCOME AND WELL-BEING

FORESTS COVER MORE THAN



OF FINLAND'S SURFACE AREA

Finland is the most forested country in Europe.



FINLAND'S FORESTS:

- Pine-dominated 64 %
- Spruce-dominated 25 %
- Deciduous-dominated 10 %



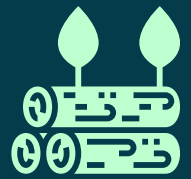
Economic forests also consist of domestic tree species.

THE FOREST INDUSTRY UTILISES



OF THE ANNUAL TREE GROWTH

The wood products industry uses 29.2 m cubic meters, and the pulp and paper industry uses 32.0 m cubic meters of wood.



OUT OF FINLAND'S TOTAL FOREST LAND AREA (INCLUDING FOREST AND SCRUBLAND)



13 %

HAS BEEN PROTECTED

FINLAND HAS 41 NATIONAL PARKS WITH A TOTAL AREA OF

1 million



HECTARES

THE NUMBER OF VISITORS TO NATIONAL PARKS IS



3,5 million

However, the majority of recreational use occurs in private forests.

IN 2022, THE COMBINED VALUE ADDED OF FORESTRY AND THE FOREST INDUSTRY WAS

10,5 bn €



WHICH ACCOUNTED FOR 4,5 % OF THE TOTAL VALUE ADDED IN THE NATIONAL ECONOMY

THE NET CARBON SINK OF FOREST LAND IN FINLAND COVERS



OF EMISSIONS (INCLUDING THE LAND USE SECTOR)

The project has been funded by Metsämiesten Säätiö Foundation.

Sources: Metsähallitus, Ministry of Environment, Natural Resources Institute Finland, Statistics Finland

The complete list of references: www.ptt.fi/julkaisut/metti/

Pellervo Economic Research 2023